



Series

/ 1.4 / 1.6 / 2.0 T
Electric Reach Truck



浙江杭叉工程机械集团股份有限公司
ZHEJIANG HANGCHA ENGINEERING MACHINERY CO.,LTD.

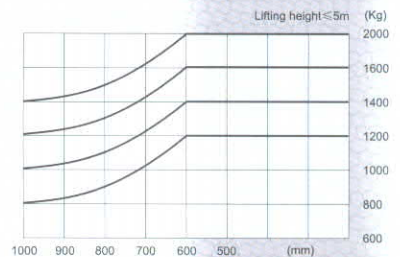
J series 1.2 / 1.4 / 1.6 / 2.0 ton Electric Reach Truck

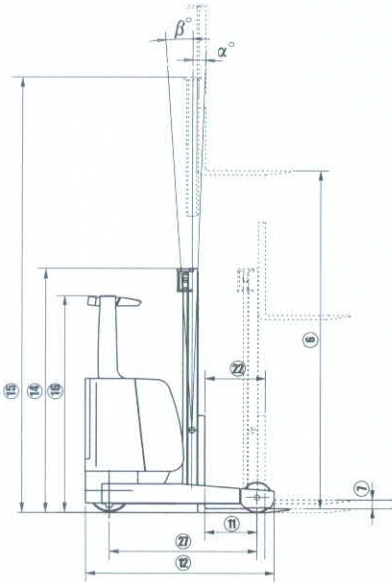
The New J series Electric Reach Truck, 1.2-2.0 ton, apart from its excellent performance, is also very economical. The reach trucks are used wherever space is confined and where heavy loads are to be raised to high lift heights.

- 1) The driver's compartment, through generous dimensioning, provides the driver with a comfortable body position. The excellent all-around visibility and the low noise level add to the ease of working.
- 2) The operator compartment incorporates controls for hydraulic functions, direction control, horn, lights and handbrake, all within convenient reach of the operator. Padded armrest, rubber floor mat and resin coated control knobs ensure comfort for daylong operation. The tilt of the steering column can be freely adjusted to any degree.
- 3) Curtis made Multi-function instrument, together with the multi display monitor provide information and function input to the operator to allow optimum performance and operator confidence.
- 4) Drive and hydraulic control fitted as standard. MOSFET CHOPPER, Power transistors with high impulse frequencies control the motors in an energy saving and noiseless manner. The drive control permits jerk-free starting and a strong acceleration. Adjustable energy feedback on releasing the drive pedal through regenerative braking.
- 5) The chassis design and steering geometry provide an outstanding turning radius of 1675mm and reach stroke of 602mm (1.4 ton model). The steering angle of 90° in each direction further enhances maneuverability. These specifications ensure improved safety clearances in confined spaced with high loading.
- 6) Low noise, less pollution and energy saving, these features all satisfied with environment protection.
- 7) Drive and electronics cover may be opened quickly and easily for servicing and maintenance work. The service access door on the truck provides excellent access to the major service components. All motors, drive gearbox, pumps, brakes and steering are easily accessible.

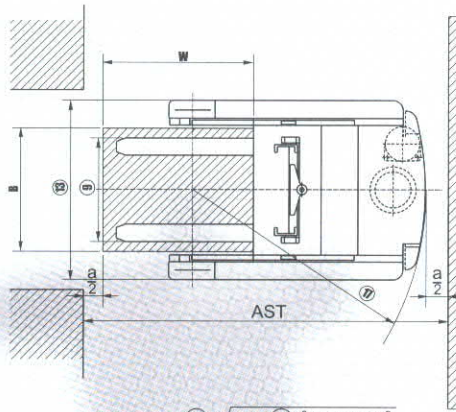


LOAD CHART





DIMENSIONS



$$AST = a + \textcircled{17} + \sqrt{(W - \textcircled{11})^2 + (B / 2)^2}$$

a : safety clearance
B : Pallet width
W : Pallet length



J Series Reach forklift specification

| General | | | | | | | | | | | |
|---------|---|------------------------------|-----------------------|------------|------------|------------|------------|----------|------------|--------|--|
| | | CQD12H-J | CQD12H-JC2 | CQD14H-J | CQD14H-JC2 | CQD16H-J | CQD16H-JC2 | CQD20H-J | CQD20H-JC2 | | |
| 1 | Manufacture | | | | | | | | | | |
| 2 | Model | | | | | | | | | | |
| 3 | Power type | Battery | | Battery | | Battery | | Battery | | | |
| 4 | Rated capacity | kg | 1200 | 1400 | 1600 | 2000 | | | | | |
| 5 | Load center | mm | 600 | 600 | 600 | 600 | | | | | |
| 6 | Lift height | mm | 3000 | 3000 | 3000 | 3000 | | | | | |
| 7 | Free lift height | mm | 340 | 340 | 340 | 340 | | | | | |
| 8 | Fork size | L x W x T | mm | 920x100x35 | 920x100x35 | 920x100x35 | 920x100x35 | | | | |
| 9 | Fork spread(outside) | Min. / Max. | mm | 220 / 896 | 220 / 896 | 220 / 896 | 220 / 896 | | | | |
| 10 | Mast tilt range (Refer to mast table) | $\alpha^\circ / \beta^\circ$ | deg | 2 / 4 | 2 / 4 | 2 / 4 | 2 / 4 | | | | |
| 11 | Axle centre of fork face | mm | 390 | 390 | 330 | 330 | | | | | |
| 12 | Overall dimensions | Length to face of fork | mm | 1802 | 1802 | 1802 | 1882 | | | | |
| 13 | | Overall width | mm | 1240 | 1240 | 1240 | 1272 | | | | |
| 14 | | Mast lowered height | mm | 2100 | 2100 | 2100 | 2100 | | | | |
| 15 | | Mast extended height | mm | 3565 | 3565 | 3565 | 3565 | | | | |
| 16 | Overhead guard height | mm | 2075 | 2075 | 2075 | 2075 | | | | | |
| 17 | Turning radius(outside) | mm | 1675 | 1675 | 1675 | 1755 | | | | | |
| 18 | Min. right angle stacking aisle width (Ast) | Pallet: W x B=1200 x 1000 | mm | 2825 | 2825 | 2825 | 2905 | | | | |
| 19 | | Pallet: W x B=800 x 1200 | mm | 2600 | 2600 | 2600 | 2680 | | | | |
| 20 | Speed | Travel | Km / h | 10.2 | 10.2 | 10.2 | 10.2 | | | | |
| 21 | | Lifting (Full load) | mm/sec | 260 | 260 | 220 | 210 | | | | |
| 22 | Extend distance | mm | 602 | 602 | 542 | 542 | | | | | |
| 23 | Max. Gradeability (Full load) | % | 10 | 10 | 10 | 10 | | | | | |
| 24 | Self weight | kg | 2850 | 2850 | 3000 | 3250 | | | | | |
| 25 | Wheels (diameterxwidth) | Front | mm | 285 x 100 | 285 x 100 | 285 x 100 | 343 x 108 | | | | |
| 26 | | Drive | mm | 343 x 114 | 343 x 114 | 343 x 114 | 343 x 114 | | | | |
| 27 | Wheelbase | mm | 1420 | 1420 | 1420 | 1500 | | | | | |
| 28 | Ground clearance | mm | 70 | 70 | 70 | 70 | | | | | |
| 29 | Battery | Model | D-400B | | D-500 | | D-500 | | | | |
| 30 | | Voltage / Capacity (5 HR) | V / AH | 48 / 400 | 48 / 400 | 48 / 500 | 48 / 500 | | | | |
| 31 | | Weight (with box) | kg | 760 | 760 | 900 | 900 | | | | |
| 32 | Electric motors | Drive | Rated output / S60min | kw | 5.4 | 5.5 | 5.4 | 5.5 | 5.4 | 5.5 | |
| 33 | | Load | Rated output / S15min | kw | 7.5 | 12.8 | 7.5 | 12.8 | 7.5 | 12.8 | |
| 34 | Control | Manufacture | CURTIS | CURTIS | CURTIS | CURTIS | CURTIS | CURTIS | CURTIS | CURTIS | |
| 35 | | Type | DC | AC | DC | AC | DC | AC | DC | AC | |
| 36 | Operating pressure | For attachments | MPa | 14.5 | 14.5 | 14.5 | 14.5 | | | | |

1. Special lifting height available (2.7m, 3.5m, 3.6m, 4m, 4.3m, 4.5m, 4.8m, 5m, 5.5m, 6m, 6.5m, 7m, 7.5m, 8m).
2. Attachment available.
3. Battery charger available.
4. The specification in this table are for standard models only. For further information please contact us.
5. Specification are subject to change without notice.

J series Reach forklift mast specification

| Type | Model | Mast fork height | Overall height | | Free lift | Tilt range | | Capacity | | | | Tilting method |
|----------------------------------|-------------|------------------|----------------|------------------------|-----------|------------------|-----|----------|-------------------------|------|------|-----------------------|
| | | | Lowered | Extended With backrest | | Without backrest | FWD | RWD | Load capacity at 600 mm | | | |
| | | | | | mm | | | | mm | mm | mm | |
| Wide view mast | 1.4QM / 2QM | 2700 | 1925 | 3265 | 340 | 2 | 4 | 1200 | 1400 | 1600 | 2000 | Mast tilting |
| | | 3000 | 2075 | 3565 | 340 | 2 | 4 | 1200 | 1400 | 1600 | 2000 | |
| | | 3300 | 2225 | 3865 | 340 | 2 | 4 | 1200 | 1400 | 1600 | 2000 | |
| | | 3500 | 2325 | 4065 | 340 | 2 | 4 | 1200 | 1400 | 1600 | 2000 | |
| | | 3600 | 2375 | 4165 | 340 | 2 | 4 | 1200 | 1400 | 1600 | 2000 | |
| | | 4000 | 2625 | 4065 | 340 | 2 | 4 | 1200 | 1400 | 1600 | 2000 | |
| | | 4300 | 2790 | 4865 | 340 | 2 | 4 | 1200 | 1400 | 1600 | 2000 | |
| Wide view full free 3-stage mast | 1.4QN / 2QN | 4500 | 2900 | 5065 | 340 | 2 | 4 | 1200 | 1400 | 1600 | 2000 | Fork carriage tilting |
| | | 4300 | 2085 | 4900 | 1500 | 2 | 4 | 1200 | 1400 | 1600 | 2000 | |
| | | 4500 | 2165 | 5100 | 1500 | 2 | 4 | 1200 | 1400 | 1600 | 2000 | |
| | | 4800 | 2265 | 5400 | 1600 | 2 | 4 | 1200 | 1400 | 1600 | 2000 | |
| | | 5000 | 2315 | 5600 | 1700 | 2 | 4 | 1200 | 1400 | 1600 | 2000 | |
| | | 5500 | 2490 | 6100 | 1850 | 2 | 4 | 1100 | 1300 | 1500 | 1900 | |
| | | 6000 | 2665 | 6600 | 2000 | 2 | 5 | 1000 | 1200 | 1400 | 1800 | |
| | | 6500 | 2815 | 7100 | 2200 | 2 | 5 | 900 | 1100 | 1300 | 1600 | |
| | | 7000 | 2975 | 7600 | 2380 | 2 | 5 | 850 | 1000 | 1200 | 1400 | |
| | | 7500 | 3145 | 8100 | 2540 | 2 | 5 | 750 | 900 | 1100 | 1200 | |
| | | 8000 | 3310 | 8600 | 2725 | 2 | 5 | 600 | 700 | 900 | 1000 | |



CE CERTIFICATE



ISO14001: 2004



ISO9001: 2000

Standard Feature

- PU drive wheel & support wheel
- High capacity storage battery
- Emergency disconnect switch
- 3 Spools control valve
- Arm rest, head protector
- High elastic seat
- Drive, lift, steering controlled
- LED Instrument and LCD hour meter
- 3 meters 2-stage mast
- Adjustable steering column
- Front head lamp
- CURTIS MOSFET chopper controller
- Separated Excited Motor



Optional Feature

- AC motor
- Safety pedal
- 4 spools control valve
- 4.3-8 meters 3-stage mast
- 2.7-4.5 meters 2-stage mast
- With attachment
- Fast battery-charge system
- High capacity battery
- Front wheel protect cover
- Higher or wider backrest



ZHEJIANG HANGCHA ENGINEERING MACHINERY CO.,LTD.
(ZHEJIANG HANGCHA IMP. & EXP. CO.,LTD.)

www.hcforklift.com

Add: 398 Shi Qiao Road, Hangzhou 310022, P.R.China
Tel: +86-571-88135110 88126376 88135220 88125527 88130499(Ext. 8116, 8206, 8200)
Fax: +86-571-88132890 88126379
E-mail: sales@hcforklift.com



ZHEJIANG HANGCHA IMP. & EXP. CO., LTD
浙江杭叉进出口有限公司

HCIE is authorized to deal with the whole import & export business of **ZHEJIANG HANGCHA ENGINEERING MACHINERY CO.,LTD.**

Zhejiang Hangcha Engineering Machinery Co., Ltd. reserves the right to make any changes without notice concerning colors, equipment, or specifications detailed in this brochure, or to discontinue individual models. The colors of trucks, delivered may differ slightly from those in brochures.