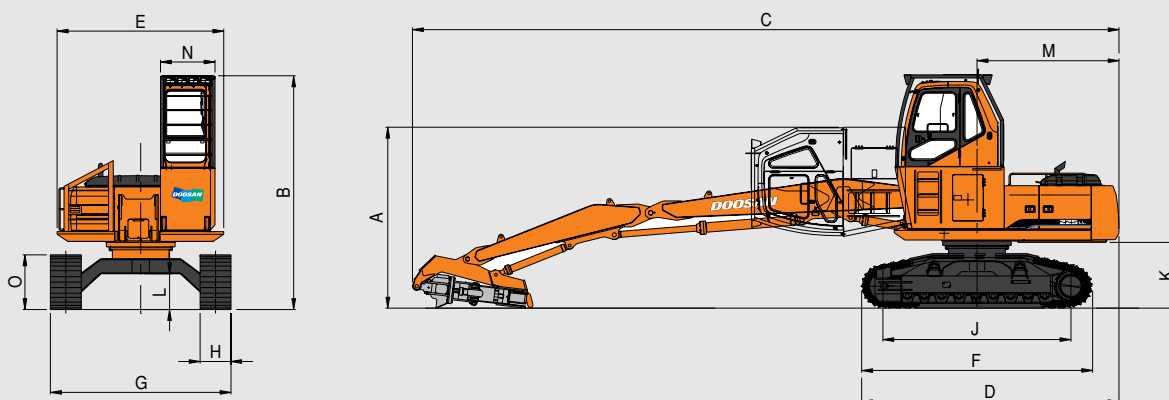


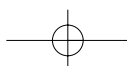
Dimensions

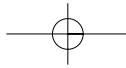


Model	Unit	Solar 225LL	Solar 300LL
A Overall Transport Height W/Attachment	mm (ft · in)	3,505 (11' 6")	3,660 (12')
B Overall Height	mm (ft · in)	4,525 (14' 10")	4,683 (15' 5")
C Overall Length	mm (ft · in)	13,678 (44' 11")	14,680 (48' 2")
D Overall Length (Without Attachment)	mm (ft · in)	4,984 (16' 5")	5,675 (18' 7")
E Width of Upper Structure	mm (ft · in)	3,226 (10' 7")	3,476 (11' 5")
F Track Overall Length	mm (ft · in)	4,472 (14' 8")	4,950 (16' 2")
G Track Overall Width	mm (ft · in)	3,500 (11' 6")	3,600 (11' 10")
H Track Shoe Width	mm (ft · in)	600 (2')	700 (2' 4")
J Tumbler Distance	mm (ft · in)	3,645 (11' 11")	4,010 (13' 2")
K Upper Structure Ground Clearance	mm (ft · in)	1,274 (4' 3")	1,415 (4' 8")
L Minimum Ground Clearance	mm (ft · in)	690 (2' 4")	773 (2' 7")
M Tail Swing Radius	mm (ft · in)	2,750 (9')	3,200 (10' 6")
N Cabin Guard Width	mm (ft · in)	1,055 (3' 6")	1,055 (3' 6")
O Track Height	mm (ft · in)	1,056 (3' 6")	1,246 (4' 1")

Specifications

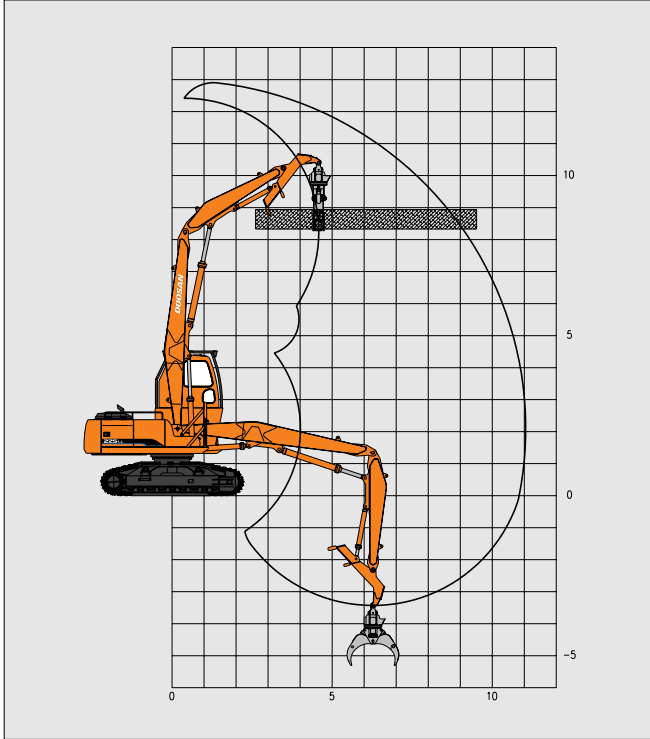
Model	Unit	Solar 225LL	Solar 300LL
Operating Weight (w/o grapple)	kg (lb)	27,450 (60,500)	34,850 (78,600)
Max. Reach @ Ground Level	mm (ft · in)	10,840 (35' 6")	11,400 (37' 5")
Max. Heel Height	mm (ft · in)	12,900 (42' 4")	13,580 (44' 7")
Undercarriage Length	mm (ft · in)	4,500 (14' 8")	4,950 (16' 3")
Track Pad (Heavy-duty 2-bar)	mm (ft · in)	600 (2')	700 (2' 4")
Overall Width (Undercarriage)	mm (ft · in)	3,500 (11' 6")	3,600 (11' 10")
Length of Track on Ground	mm (ft · in)	3,645 (11' 11")	4,010 (13' 2")
Ground Clearance	mm (ft · in)	690 (2' 4")	773 (2' 7")
DOOSAN Engine	—	DB58TIS	DE08TIS
Horsepower	kw/hz (Hp/rpm)	110/33(148/2,000)	147/32(197/1,900)



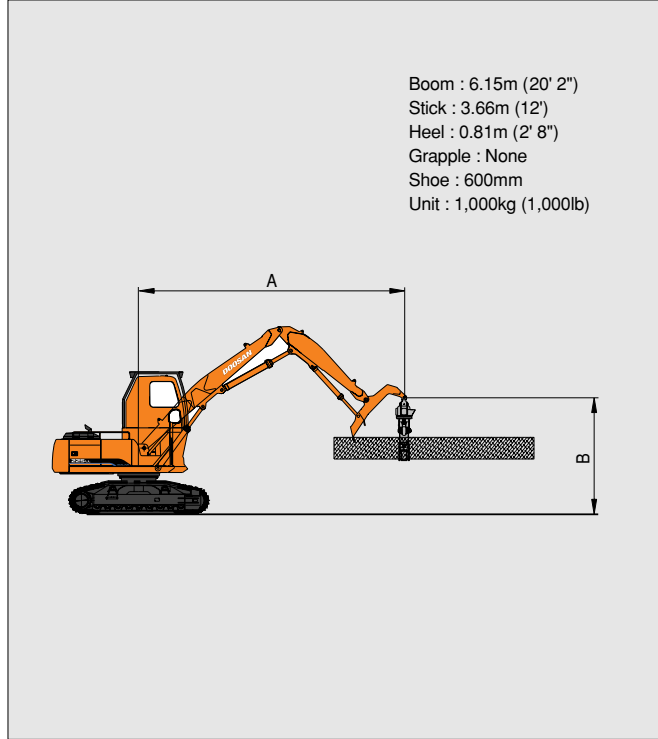


Working Ranges & Lifting Capacity

Working Range (S225LL)



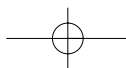
Lifting Capacity (S225LL)

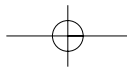


B m(ft)	3.05 (10)		4.57 (15)		6.10 (20)		7.62 (25)		9.14 (30)		10.67 (35)	
	☺	☹	☺	☹	☺	☹	☺	☹	☺	☹	☺	☹
12.19 (40)	13.209 (*29.12)	13.209 (*29.12)										
10.67 (35)			8.396 (*18.51)	8.396 (*18.51)	7.643 (*16.85)	7.548 (16.64)						
9.14 (30)			7.933 (*17.49)	7.933 (*17.49)	6.917 (*15.25)	6.917 (*15.25)	6.505 (*14.34)	5.303 (11.69)				
7.62 (25)			7.952 (*17.53)	7.952 (*17.53)	6.845 (*15.09)	6.845 (*15.09)	6.278 (*13.84)	5.433 (12.00)	4.903 (10.81)	3.901 (8.60)		
6.10 (20)			8.341 (*18.39)	8.341 (*18.39)	7.199 (*15.87)	7.199 (*15.87)	6.409 (*14.13)	5.420 (11.95)	4.944 (10.90)	3.942 (8.69)		
4.57 (15)			8.636 (*19.04)	8.636 (*19.04)	7.884 (*17.38)	7.625 (16.81)	6.645 (14.65)	5.307 (11.70)	4.917 (10.84)	3.915 (8.63)	3.783 (8.34)	2.985 (6.58)
3.05 (10)			10.959 (*24.16)	10.959 (*24.16)	8.705 (*19.19)	7.285 (16.06)	6.468 (14.26)	5.139 (11.34)	4.840 (10.67)	3.837 (8.46)	3.760 (8.29)	2.957 (6.25)
1.52 (5)			12.465 (*27.48)	10.718 (23.63)	8.850 (19.51)	6.931 (15.28)	6.278 (13.84)	4.962 (10.94)	4.749 (10.47)	3.759 (8.28)	3.738 (8.24)	2.939 (6.48)
0 (Ground)			12.011 (*26.48)	10.206 (22.50)	8.564 (18.88)	6.663 (14.69)	6.128 (13.51)	4.817 (10.62)	4.681 (10.32)	3.688 (8.13)	3.738 (8.24)	2.939 (6.48)
-1.52 (-5)	4.010 (*8.84)	4.010 (*8.84)	8.870 (*21.76)	8.870 (*21.76)	8.414 (18.55)	6.523 (14.38)	6.046 (13.33)	4.740 (10.45)	4.654 (10.26)	3.661 (8.07)		
-3.05 (-10)			10.523 (*23.20)	9.952 (21.94)	7.888 (*17.39)	6.491 (14.31)	6.015 (13.26)	4.713 (10.39)				

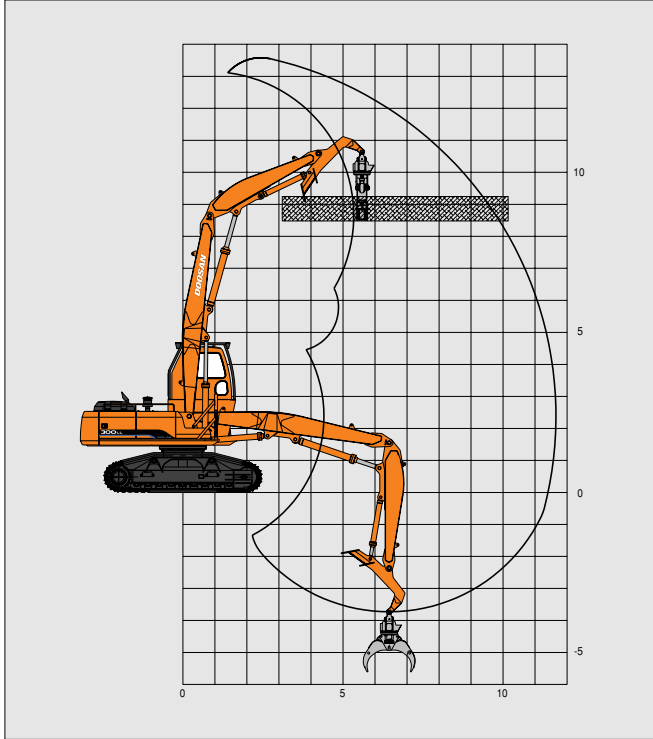
1. The load point is a pin located on the top of the heel.
 2. " * " Rated loads are based on hydraulic capacity.
 3. Rated loads do not exceed 87% of hyd. Capacity or 75% of tipping capacity.

☺ : Rating over front
 ☹ : Rating over side

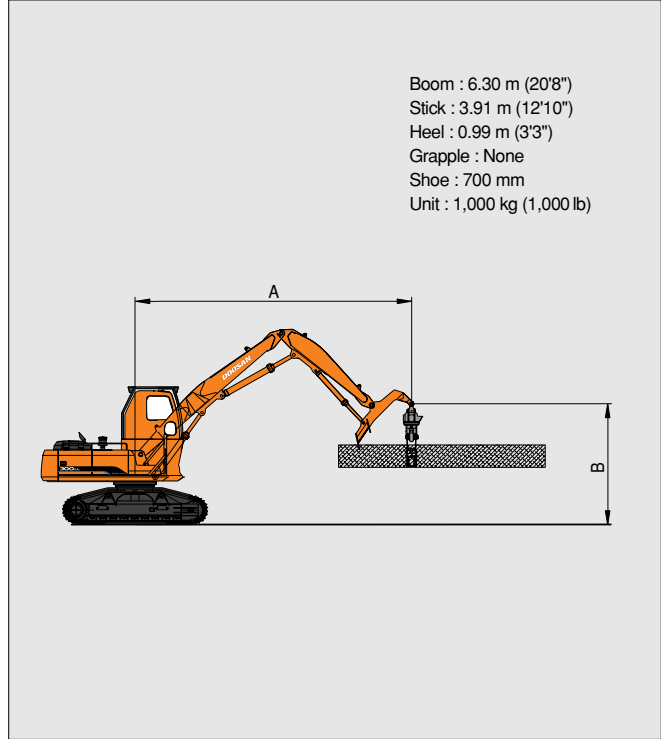




Working Range (S300LL)



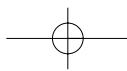
Lifting Capacity (S300LL)

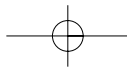


B m(ft)	A m(ft)		3.05 (10)		4.57 (15)		6.10 (20)		7.62 (25)		9.14 (30)		10.67 (35)	
	⊞	⊞	⊞	⊞	⊞	⊞	⊞	⊞	⊞	⊞	⊞	⊞	⊞	⊞
12.19 (40)			11.508 (*25.37)	11.508 (*25.37)	9.498 (*20.94)	9.498 (*20.94)								
10.67 (35)					8.759 (*19.31)	8.759 (*19.31)	8.342 (*18.39)	7.366 (16.24)						
9.14 (30)					8.237 (*18.16)	8.237 (*18.16)	7.825 (*17.25)	7.593 (16.74)	7.480 (*16.49)	5.529 (12.09)				
7.62 (25)					8.364 (*18.44)	8.364 (*18.44)	7.788 (*17.17)	7.661 (16.89)	7.330 (*16.16)	5.557 (12.25)				
6.10 (20)					9.018 (*19.88)	9.018 (*19.88)	8.119 (*17.90)	7.584 (16.72)	7.416 (*16.35)	5.566 (12.27)	5.806 (12.80)	4.218 (9.30)		
4.57 (15)			8.255 (*18.20)	8.255 (*18.20)	10.111 (*22.29)	10.111 (*22.29)	8.695 (*19.17)	7.403 (16.32)	7.498 (16.53)	5.489 (12.10)	5.774 (12.73)	4.187 (9.23)		
3.05 (10)			14.089 (*31.06)	14.089 (*31.06)	11.263 (*24.83)	10.129 (22.33)	9.358 (*20.63)	7.149 (15.76)	7.366 (16.24)	5.362 (11.82)	5.738 (12.65)	4.150 (9.15)		
1.52 (5)			16.402 (*36.16)	14.701 (32.41)	12.397 (*27.33)	9.607 (21.18)	9.562 (21.08)	6.890 (15.19)	7.226 (15.93)	5.230 (11.53)	5.688 (12.54)	4.105 (9.05)		
0 (Ground)			11.245 (*24.79)	11.245 (*24.79)	12.959 (*28.57)	9.222 (20.33)	9.335 (20.58)	6.681 (14.73)	7.112 (15.68)	5.121 (11.29)	5.656 (12.47)	4.073 (8.98)		
-1.52 (-5)	4.069 (*8.97)	4.069 (*8.97)	7.661 (*16.89)	7.661 (*16.89)	12.610 (*27.80)	9.027 (19.90)	9.213 (20.31)	6.568 (14.48)	7.058 (15.56)	5.071 (11.18)	5.652 (12.46)	4.069 (8.97)		
-3.05 (-10)			*11.335 (24.99)	11.335 (*24.99)	11.331 (*24.98)	8.986 (19.81)	8.763 (*19.32)	6.536 (14.41)						

1. The load point is a pin located on the top of the heel.
 2. * * * Rated loads are based on hydraulic capacity.
 3. Rated loads do not exceed 87% of hyd. Capacity or 75% of tipping capacity.

⊞ : Rating over front
 ⊞ : Rating over side





Technical Data



Hydraulic system

e-EPOS (Electronic Power Optimizing System) allows the operator to maximize work efficiency over a full range of operating conditions and to minimize fuel consumption.

- Hydraulic system assures fully independent and combined operations.
- Automatic 2 speed travel system for high traction force and travel speed.
- Cross-sensing and fuel saving pump system.
- Auto idle system.
- 2-Working / 2-power mode selection system.
- Computer aided engine-pump control.

S225LL

Main pumps	2 variable displacement axial piston pumps.
Max. oil flow	2 × 212 ℓ/min (2 × 56 US gpm, 2 × 46.6 Imp gpm)
Pilot pump	Gear pump
Max. oil flow	30 ℓ/min (7.9 US gpm, 6.6 Imp gpm)
Swing motor	
Relief valve	275bar (3,980psi, 280 kgf/cm ²)
Main relief valves	
Hoist/Stick/Heel	Normal : 324bar (4,690psi, 330kgf/cm ²) Power Boost : 343bar (4,980 psi, 350kgf/cm ²)
Travel circuit	324bar (4,690psi, 330kgf/cm ²)

S300LL

Main pumps	2 variable displacement axial piston pump
Max. oil flow	2x246 ℓ/min (2x65 US gpm, 2x54 Imp gpm)
Pilot pump	Gear pump
Max. oil flow	28.5 ℓ/min (7.5 US gpm, 6.3 Imp gpm)
Swing motor	
Relief valve	279 bar (4,050 psi, 285 kgf/cm ²)
Main relief valves	
Hoist/stick/Heel	Normal : 324bar (4,690 psi, 330kgf/cm ²) Power Boost : 343bar (4,980psi, 350 kgf/cm ²)
Travel circuit	324 bar (4,690 psi, 330kgf/cm ²)



Swing mechanism

High-torque, axial piston motor with planetary reduction gear bathed in oil. Swing circle is singlerow, shear type ball bearing with induction-hardened internal gear. Internal gear and pinion gear immersed in lubricant.

Swing parking brake is spring-set, hydraulic-released disc type. A two position swing lock secures the super-structure for transportation.

S225LL

- Swing speed 0 to 12 rpm(min⁻¹)
- Rear swing radius 2,750mm (9')

S300LL

- Swing speed 0 to 10.1 rpm(min⁻¹)
- Rear swing radius 3,200mm (10'6")



Standard equipment

All-weather steel cab with 360° visibility. Safety glass windows. Wide window wiper. Sliding fold-in front window. Sliding side window. Lockable door. Deluxe fully adjustable reclining seat. Lever lock. Cab heater, air conditioning, stereo cassette/radio. Hydraulic tilt cab riser with log guard.

Instrument panel

Engine coolant temperature gauge. Electric hour meter. Fuel meter. Tachometer. Voltmeter. Hydraulic oil pressure gauge. Operations monitor : (Engine oil pressure, battery charge, engine oil filter clogging, air cleaner clogging and hydraulic oil filter clogging). Alarm buzzer (Engine oil pressure and engine coolant temperature.)



Superstructure revolving frame

A deep, fully-reinforced box section. Heavy gauge steel plates are used for ruggedness.



Drive

Each track is driven by an independent, high-torque, axial piston motor through planetary reduction gear. Two levers or foot pedal control provide smooth travel or counter-rotation upon demand.

S225LL

Travel speed (High/Low)	5.4/3.0km/h (3.4/1.9mph)
Maximum traction force	20,800kgf (45,860 lbf)
Gradeability	35°(70%) continuous

S300LL

Travel speed (High/Low)	5.0/3.1km/h (3.3/2.1mph)
Maximum traction force	23,400kgf (51,587 lbf)
Gradeability	35°(70%) continuous



Operator's cab

A roomy, independent, shock and noise-free operator's cab, 4 side safety glass windows give all-round visibility. Front window slides up and stores in the roof and side window can be opened for ventilation. Fully adjustable suspension seat. Air conditioner. ISO standard cab.

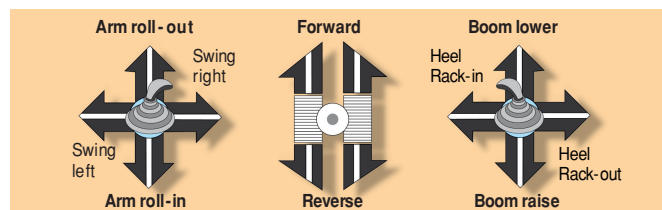


Brakes

Two oil disc brake on final drive input shafts. Parking brake is spring-set, hydraulic-released disc type.

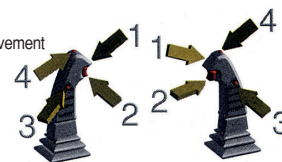


Controls



• Left Control

- 1) Swing and Arm Movement
- 2) Grapple Open
- 3) Horn
- 4) Grapple Rotation- Counter Clockwise



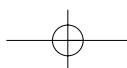
• Right Control

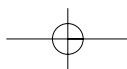
- 1) Control for Boom and Heel Rack
- 2) Grapple Close
- 3) Lift Power Button
- 4) Grapple Rotation Clockwise



Undercarriage

Tractor-type undercarriage. Heavy-duty track frame. Side frames are welded, securely and rigidly, to the track frame. Lifetime-lubricated track rollers, idlers and sprockets with floating seals. Track shoes, idlers and sprockets with floating seals. Track shoes of induction hardened rolled alloy with double grousers. Specially heat treated connecting pins. Hydraulic track adjusters with shock-absorbing recoil springs with walker car body 3,500 (11'6") (S225LL), 3,600 (11'10") (S300LL) overall width and heavy-duty swivel guard. Final drive protected by heavy-duty plate.





Seoul Office :
 Doosan Tower 27th FL. 18-12, Euljiro-6Ga,
 Jung-Gu, Seoul, Korea 100-730
 Tel : +82-2-3398-8114
 Fax : +82-2-3398-8117
www.doosaninfracore.com

Doosan Infracore Europe S.A.

1A, Rue Achille Degrâce, 7080 Frameries, Belgium
 Tel : +32-65-61-3230 Fax : +32-65-67-7338

Doosan Infracore U.K., Ltd.

Doosan House, Unit 6, 3 Heol Y Gamlas, Parc Nantgarw, Nantgarw,
 Cardiff. CF15 7QU, U.K.
 Tel : +44-1443-84-2273 Fax : +44-1443-84-1933

Doosan Infracore Europe S.A. Germany

Heinrich-von-Stephan str. 2 40764 Langenfeld, Germany
 Tel : +49-2173-2035-210 Fax : +49-2173-2035-219

Doosan Infracore France

ZAC de La Clef Saint Pierre - Buroplus 2 1A Avenue Jean d'Alembert
 78990 Elancourt, France
 Tel : +33-(0)1-30-16-21-41 Fax : +33-(0)1-30-16-21-44

Doosan Infracore America Corporation

2905 Shawnee Industrial Way, Suwanee, Georgia 30024, U. S. A
 Tel : +1-770-831-2200 Fax : +1-770-831-0480

Doosan Infracore China Co., Ltd.

#28, Wuzhishan Road, Eco. & Tech, Development Zone, Yantai, Shandong, China
 Tel : +86-535-638-2000 Fax : +86-535-638-2004

Doosan Infracore South Africa (PTY) LTD.

60C Electron Road, Isando 1600, Johannesburg, South Africa
 Tel : 27-11-974-2095 Fax : 27-11-974-2778

Doosan Infracore Middle East Center (Dubai)

P.O.Box 183127, Al-Serkal Building, Air Port Road, Dubai, U.A.E
 Tel : +971-4-295-2781~2 Fax : +971-4-295-2783

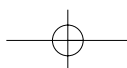
Doosan Infracore Latinamerica oficina (Colombia)

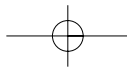
Dia gonal 127 A No. 17-14, oficina 302 Bogota, Colombia
 Tel : +571-216-1655 Fax : +571-648-7700



PBP S000C50L 0702

The illustrations do not necessary show the product in standard version.
 All products and equipments are not available in all markets.
 Materials and specifications are subjects to change without prior notice.





Doosan Infracore
Construction Equipment

SOLAR225LL / 300LL

SOLAR 225LL

Engine Power :

DIN 6271,net 114kw(155ps)@2,000 rpm

SAE J1349,net 110kw(150HP)@2,000 rpm

SAE J1349,gross 114kw (153HP) @ 2,000 rpm

SAE J1349,net 110kw (148HP) @ 2,000 rpm

Operational Weight (Without Grapple) : 27,450 kg (60,500lb)

SOLAR 300LL

Engine Power :

DIN 6271,net 151kw(205ps)@1,900 rpm

SAE J1349,net 147kw(200HP)@1,900 rpm

SAE J1349,gross 151kw (202HP) @ 2,000 rpm

SAE J1349,net 147kw (197HP) @ 2,000 rpm

Operational Weight (Without Grapple) : 34,850 kg (78,600lb)

